

20' MAINTENANCE EASEMENT ORB 954, PAGE 1690 TO BE VACATED AND ABANDONED WITH THIS PLAT

PALM CITY FARMS
PLAT BOOK 6, PAGE 42
PALM BEACH (NOW MARTIN) COUNTY, FLORIDA

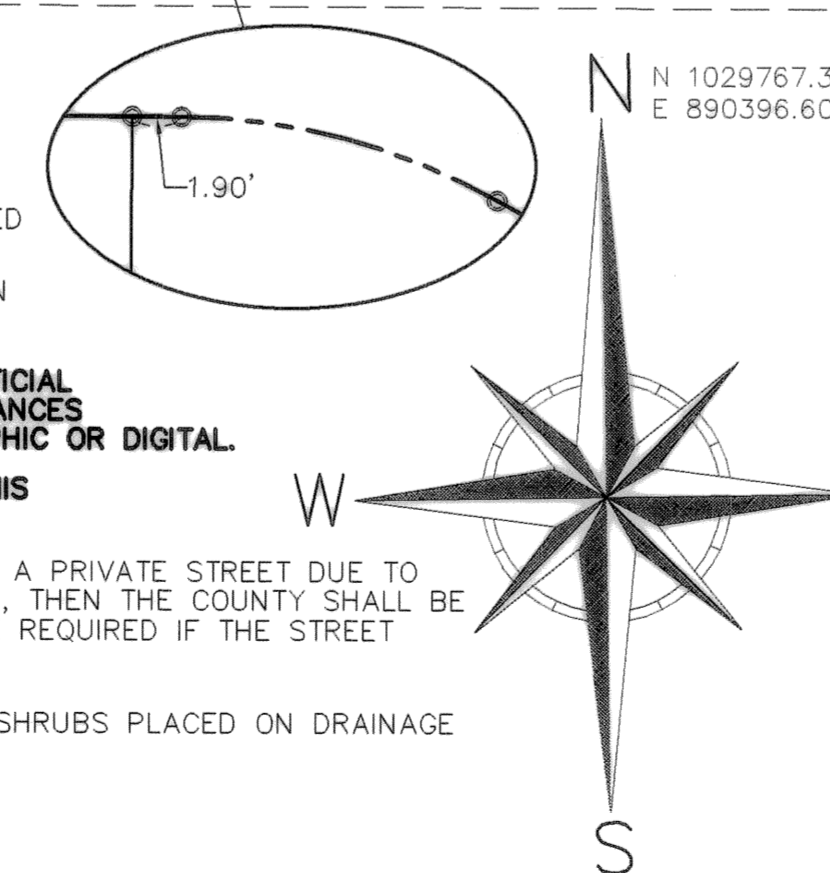
30' DRAINAGE EASEMENT ORB 954, PAGE 1690 TO BE VACATED AND ABANDONED WITH THIS PLAT

LEGEND

- M.E. INDICATES MAINTENANCE EASEMENT
- D.E. INDICATES DRAINAGE EASEMENT
- U.E. INDICATES UTILITY EASEMENT
- D.B. INDICATES DEED BOOK
- REF INDICATES REFERENCE
- D INDICATES CENTRAL ANGLE
- L INDICATES ARC LENGTH
- AC INDICATES ACRES
- ORB INDICATES OFFICIAL RECORD BOOK
- PG INDICATES PAGE
- INDICATES SET NO. 5 IRON ROD AND CAP "BL LB 6852"
- INDICATES NAIL AND DISK (PCP)
- INDICATES SET 4x4 CONCRETE MONUMENT WITH ALUMINUM DISC "BETSY LINDSAY, INC. PRM LB 6852" (PRM)

GENERAL NOTES

- A. BEARINGS AS SHOWN HEREON ARE BASED ON STATE PLANE COORDINATES, AS DERIVED FROM MARTIN COUNTY G.P.S. POINTS "OWEN" AND "GS34", REFERENCE A BEARING OF S89°50'34"E ALONG THE NORTH RIGHT OF WAY LINE OF S.W. 34TH STREET IN SECTION 18, TOWNSHIP 38 SOUTH, RANGE 41 EAST, MARTIN COUNTY, FLORIDA.
- B. THIS PLAT, AS RECORDED IN ITS ORIGINAL FORM IN THE PUBLIC RECORDS, IS THE OFFICIAL DEPICTION OF THE SUBDIVIDED LANDS DESCRIBED HEREON AND WILL, IN NO CIRCUMSTANCES BE SUPPLEMENTED IN AUTHORITY BY ANY OTHER FORM OF THE PLAT, WHETHER GRAPHIC OR DIGITAL.
- C. NOTICE: THERE MAY BE ADDITIONAL RESTRICTIONS THAT ARE NOT RECORDED ON THIS PLAT THAT MAY BE FOUND IN THE PUBLIC RECORDS OF THIS COUNTY.
- D. IN THE EVENT THAT MARTIN COUNTY OR ANY PERSON(S) DISTURBS THE SURFACE OF A PRIVATE STREET DUE TO MAINTENANCE REPAIR OR REPLACEMENT OF A PUBLIC IMPROVEMENT LOCATED THEREIN, THEN THE COUNTY SHALL BE RESPONSIBLE FOR RESTORING THE STREET SURFACE TO THE EXTENT WHICH WOULD BE REQUIRED IF THE STREET WERE A PUBLIC STREET, IN ACCORDANCE WITH COUNTY SPECIFICATIONS.
- E. THERE SHALL BE NO BUILDING OR ANY OTHER KIND OF CONSTRUCTION OR TREES OR SHRUBS PLACED ON DRAINAGE EASEMENTS



OAKBROOKE ESTATES AT THE GARDENS

PHASE No. 1 OF THE GARDENS P.U.D.

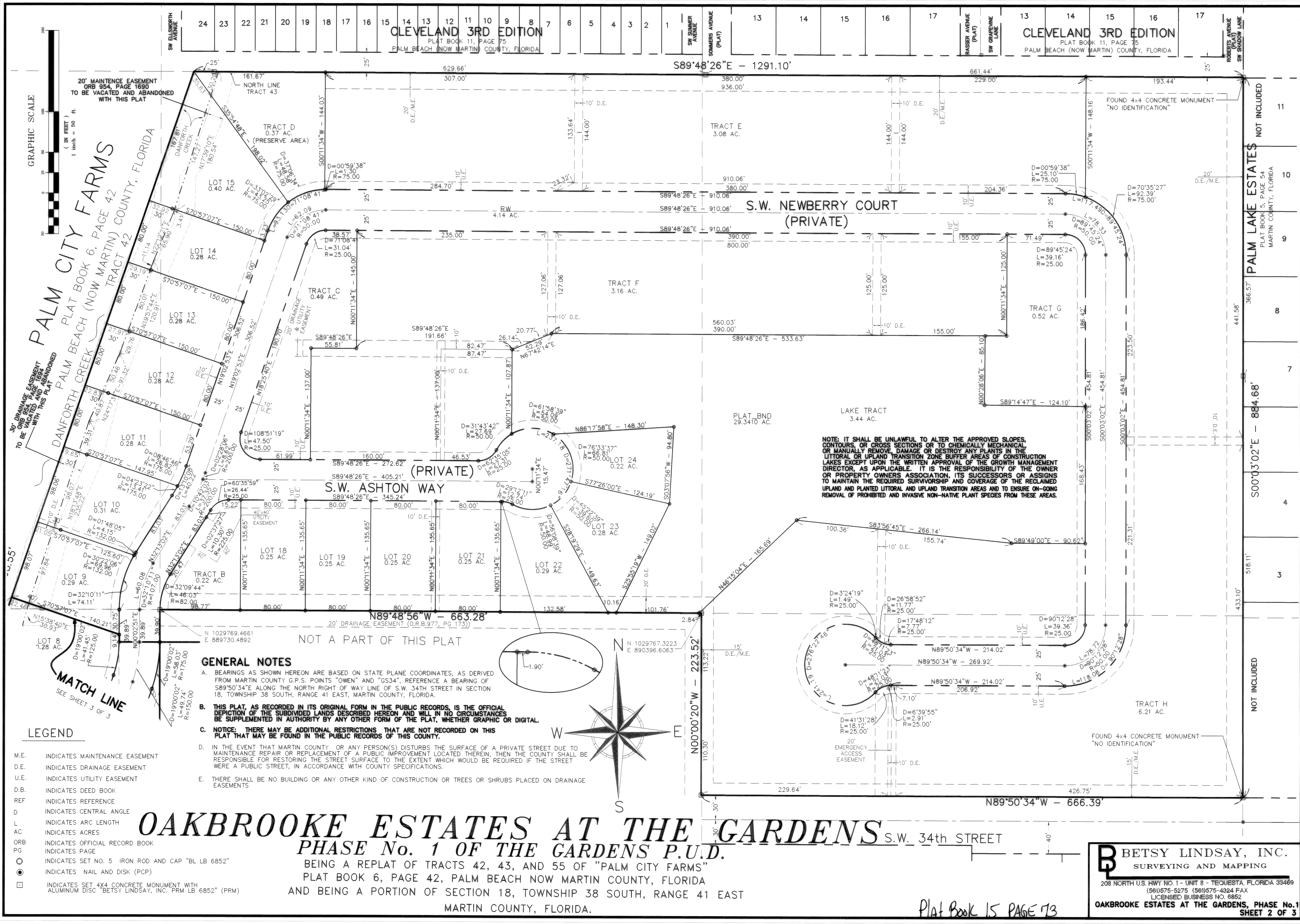
BEING A REPLAT OF TRACTS 42, 43, AND 55 OF "PALM CITY FARMS"
PLAT BOOK 6, PAGE 42, PALM BEACH NOW MARTIN COUNTY, FLORIDA
AND BEING A PORTION OF SECTION 18, TOWNSHIP 38 SOUTH, RANGE 41 EAST
MARTIN COUNTY, FLORIDA.

Plat Book 15 PAGE 73

B BETSY LINDSAY, INC.
SURVEYING AND MAPPING

208 NORTH U.S. HWY NO. 1 - UNIT 8 - TEQUESTA, FLORIDA 33469
(561)675-5275 (561)675-4324 FAX
LICENSED BUSINESS NO. 6852

OAKBROOKE ESTATES AT THE GARDENS, PHASE No.1
SHEET 2 OF 3



NOTE: IT SHALL BE UNLAWFUL TO ALTER THE APPROVED SLOPES, CONTOURS, OR CROSS SECTIONS OR TO CHEMICALLY MECHANICAL OR MANUALLY REMOVE, DAMAGE OR DESTROY ANY PLANTS IN THE LITTORAL OR UPLAND TRANSITION ZONE BUFFER AREAS OF CONSTRUCTION LAKES EXCEPT UPON THE WRITTEN APPROVAL OF THE GROWTH MANAGEMENT DIRECTOR, AS APPLICABLE. IT IS THE RESPONSIBILITY OF THE OWNER OR PROPERTY OWNERS ASSOCIATION, ITS SUCCESSORS OR ASSIGNS TO MAINTAIN THE REQUIRED SURVIVORSHIP AND COVERAGE OF THE RECLAIMED UPLAND AND PLANTED LITTORAL AND UPLAND TRANSITION AREAS AND TO ENSURE ON-GOING REMOVAL OF PROHIBITED AND INVASIVE NON-NATIVE PLANT SPECIES FROM THESE AREAS.

NOT INCLUDED
11
10
9
8
7
4
3
NOT INCLUDED

PALM LAKE ESTATES
PLAT BOOK 5, PAGE 54
MARTIN COUNTY, FLORIDA

884.68'
S00°03'02"E

518.11'
433.10'

366.57'

441.58'

518.11'